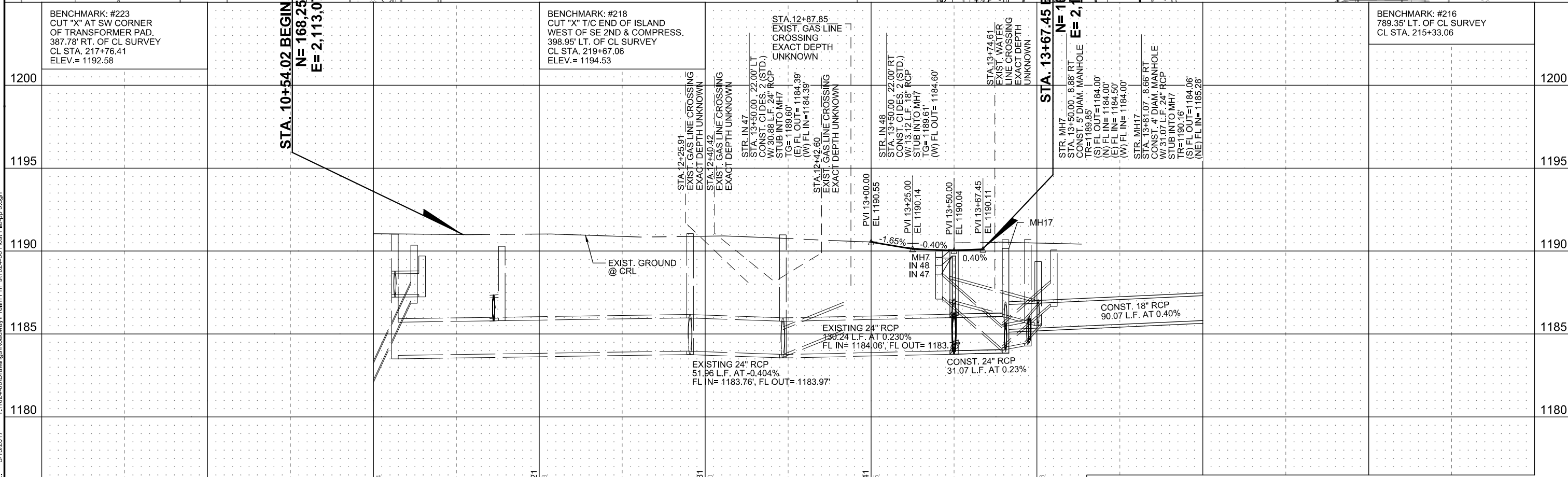
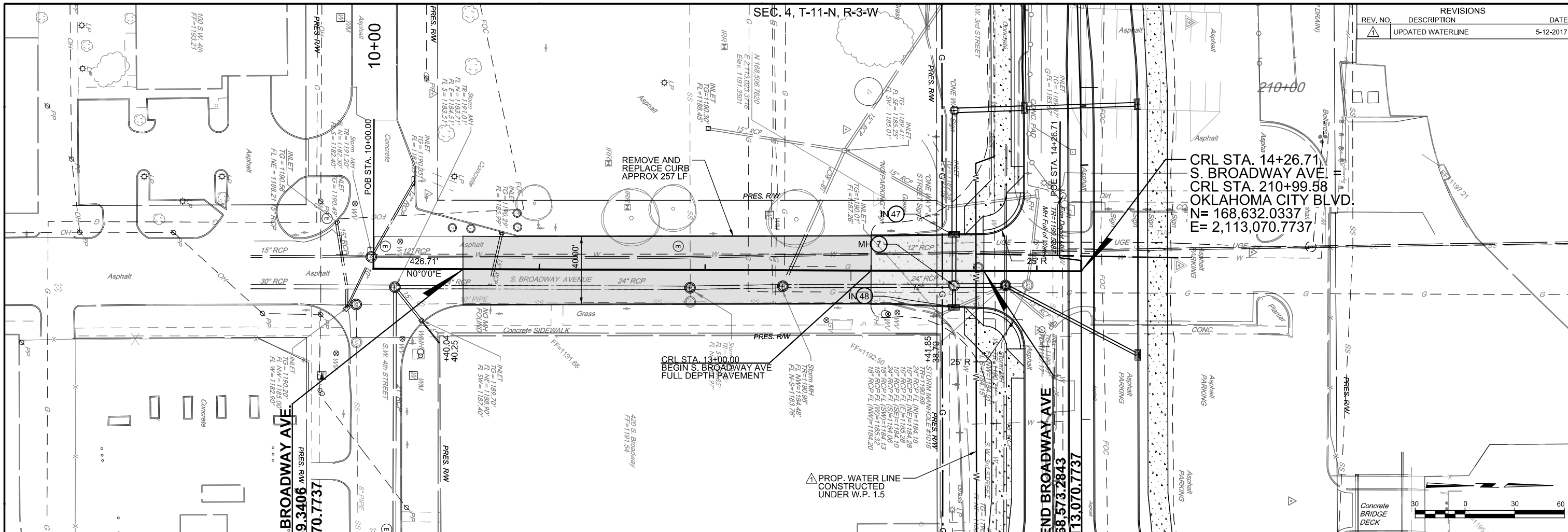


SEC. 4, T-11-N, R-3-W

REV. NO.	DESCRIPTION	DATE
1	UPDATED WATERLINE	5-12-2017



BENCHMARK: #223
CUT "X" AT SW CORNER
OF TRANSFORMER PAD.
387.78' RT. OF CL SURVEY
CL STA. 217+76.41
ELEV. = 1192.58

BENCHMARK: #218
CUT "X" T/C END OF ISLAND
WEST OF SE 2ND & COMPRESS.
398.95' LT. OF CL SURVEY
CL STA. 219+67.06
ELEV. = 1194.53

BENCHMARK: #216
789.35' LT. OF CL SURVEY
CL STA. 215+33.06

STA. 10+54.02 BEGIN BROADWAY AVE.
N = 168,259.3406
E = 2,113,070.7737

STA. 13+67.45 END BROADWAY AVE
N = 168,573.2843
E = 2,113,070.7737

CRL STA. 14+26.71
S. BROADWAY AVE. =
CRL STA. 210+99.58
OKLAHOMA CITY BLVD.
N = 168,632.0337
E = 2,113,070.7737

PRINT DATE: 5/15/2017 T:\1024-06\Drawings\Roadway\Prelim\PhP\1024-06 Host File-pp 9.dgn